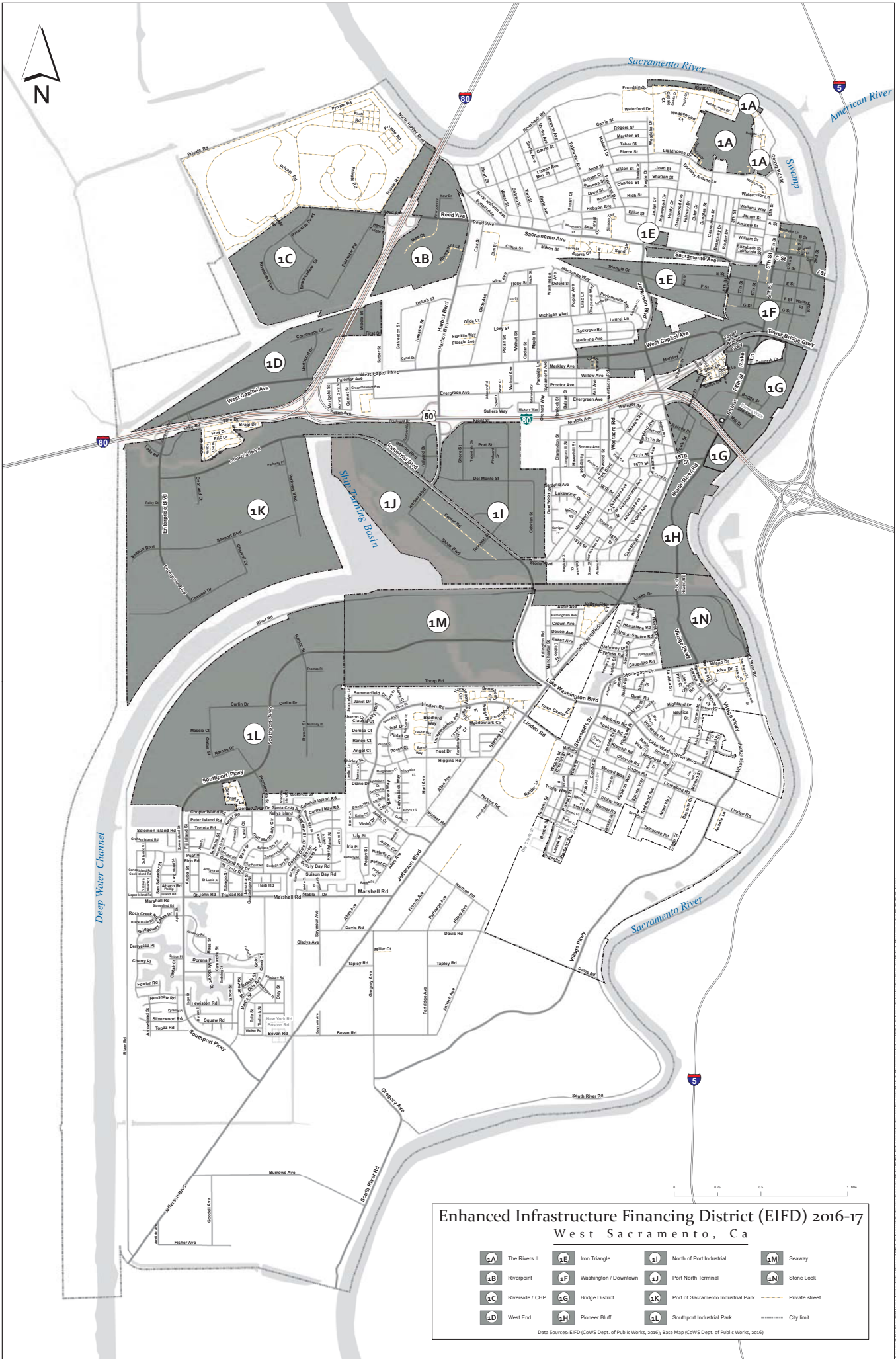


**EXHIBIT A**

**MAP OF BOUNDARIES OF WEST SACRAMENTO EIFD No.1**



**Enhanced Infrastructure Financing District (EIFD) 2016-17**  
West Sacramento, Ca

<b>1A</b> The Rivers II	<b>1E</b> Iron Triangle	<b>1I</b> North of Port Industrial	<b>1M</b> Seaway
<b>1B</b> Riverpoint	<b>1F</b> Washington / Downtown	<b>1J</b> Port North Terminal	<b>1N</b> Stone Lock
<b>1C</b> Riverside / CHIP	<b>1G</b> Bridge District	<b>1K</b> Port of Sacramento Industrial Park	Private street
<b>1D</b> West End	<b>1H</b> Pioneer Bluff	<b>1L</b> Southport Industrial Park	City limit

Data Sources: EIFD (CoWS Dept. of Public Works, 2016), Base Map (CoWS Dept. of Public Works, 2016)



VICINITY MAP  
SCALE: 1" = 1200'

**LEGEND**

ENHANCED INFRASTRUCTURE FINANCING DISTRICT  
(EFD) No. 1A - THE RIVERS



FILED IN THE OFFICE OF THE CITY CLERK OF THE CITY OF WEST SACRAMENTO THIS \_\_\_\_\_ DAY OF \_\_\_\_\_, 201\_\_.

ARVYS RANKIN  
CITY CLERK  
CITY OF WEST SACRAMENTO

I HEREBY CERTIFY THAT THIS MAP, SHOWING THE PROPOSED BOUNDARIES OF ENHANCED INFRASTRUCTURE FINANCING DISTRICT NO. 1A - THE RIVERS, COUNTY OF YOLO, STATE OF CALIFORNIA, WAS APPROVED BY THE CITY COUNCIL OF THE CITY OF WEST SACRAMENTO AT A REGULAR MEETING HELD ON THE \_\_\_\_\_ DAY OF \_\_\_\_\_, 201\_\_ BY ITS RESOLUTION No. \_\_\_\_\_.

ARVYS RANKIN  
CITY CLERK  
CITY OF WEST SACRAMENTO

FILED THIS \_\_\_\_\_ DAY OF \_\_\_\_\_, 201\_\_ AT THE HOUR OF \_\_\_\_\_ O'CLOCK \_\_\_\_\_ M., IN BOOK \_\_\_\_\_ AT PAGE \_\_\_\_\_ IN THE OFFICE OF THE COUNTY RECORDER OF THE COUNTY OF YOLO, STATE OF CALIFORNIA.

FREDDIE OAKLEY  
COUNTY RECORDER  
COUNTY OF YOLO

**PROPOSED ENHANCED INFRASTRUCTURE FINANCING DISTRICT  
(EFD) No. 1A - THE RIVERS  
CITY OF WEST SACRAMENTO,  
COUNTY OF YOLO,  
STATE OF CALIFORNIA**



VICINITY MAP  
SCALE: 1" = 1200'

**LEGEND**

 ENHANCED INFRASTRUCTURE FINANCING DISTRICT  
(EIFD) No. 1B - RIVERPOINT

FILED IN THE OFFICE OF THE CITY CLERK OF THE CITY OF  
WEST SACRAMENTO THIS \_\_\_\_\_ DAY OF \_\_\_\_\_, 201\_\_\_\_.

\_\_\_\_\_  
MRYSS RANKIN  
CITY CLERK  
CITY OF WEST SACRAMENTO

I HEREBY CERTIFY THAT THIS MAP SHOWS THE PREPARED BOUNDARIES  
OF ENHANCED INFRASTRUCTURE FINANCING DISTRICT No. 1B, CITY OF  
WEST SACRAMENTO, COUNTY OF YOLO, STATE OF CALIFORNIA, WAS  
PREPARED IN ACCORDANCE WITH THE PROVISIONS OF THE  
REGULATIONS OF THE COUNTY OF YOLO, AND WAS ADOPTED AT A  
201\_\_\_\_, BY ITS RESOLUTION No. \_\_\_\_\_.

\_\_\_\_\_  
MRYSS RANKIN  
CITY CLERK  
CITY OF WEST SACRAMENTO

FILED THIS \_\_\_\_\_ DAY OF \_\_\_\_\_, 201\_\_\_\_, AT THE HOUR OF \_\_\_\_\_ O'CLOCK, A.M.,  
IN BOOK \_\_\_\_\_ OF MAPS, AT PAGE \_\_\_\_\_, IN THE OFFICE OF THE COUNTY RECORDER OF  
THE COUNTY OF YOLO, STATE OF CALIFORNIA.

\_\_\_\_\_  
FREDRICK GARDNER  
COUNTY RECORDER  
COUNTY OF YOLO



SCALE: 1" = 300'

**PROPOSED ENHANCED INFRASTRUCTURE FINANCING DISTRICT  
(EIFD) No. 1B - RIVERPOINT  
CITY OF WEST SACRAMENTO,  
COUNTY OF YOLO,  
STATE OF CALIFORNIA**



VICINITY MAP  
SCALE: 1" = 1200'

**LEGEND**

 ENHANCED INFRASTRUCTURE FINANCING DISTRICT  
(EFD) No. 1C - RIVERSIDE/CHP

FILED IN THE OFFICE OF THE CITY CLERK OF THE CITY OF  
WEST SACRAMENTO THIS \_\_\_\_\_ DAY OF \_\_\_\_\_,  
201\_\_.

KRYSS BANKIN  
CITY CLERK  
CITY OF WEST SACRAMENTO

I HEREBY CERTIFY THAT THIS MAP SHOWS THE PROPOSED BOUNDARIES  
OF ENHANCED INFRASTRUCTURE FINANCING DISTRICT NO. 1C, CITY OF  
WEST SACRAMENTO, COUNTY OF YOLO, STATE OF CALIFORNIA. WAS  
RECORDED IN THE OFFICE OF THE COUNTY RECORDER OF THE  
COUNTY OF YOLO, STATE OF CALIFORNIA AT A  
REGULAR MEETING THEREOF HELD ON THE \_\_\_\_\_ DAY OF \_\_\_\_\_,  
201\_\_ BY ITS RESOLUTION No. \_\_\_\_\_.

KRYSS BANKIN  
CITY CLERK  
CITY OF WEST SACRAMENTO

FILED THIS \_\_\_\_\_ DAY OF \_\_\_\_\_, 201\_\_ AT THE HOUR OF \_\_\_\_\_ O'CLOCK \_\_\_\_\_ M.  
IN BOOK \_\_\_\_\_ OF MAPS, AT PAGE \_\_\_\_\_ IN THE OFFICE OF THE COUNTY RECORDER OF  
THE COUNTY OF YOLO, STATE OF CALIFORNIA.

FREDIE OAKLEY  
COUNTY RECORDER  
COUNTY OF YOLO



SCALE: 1" = 400'

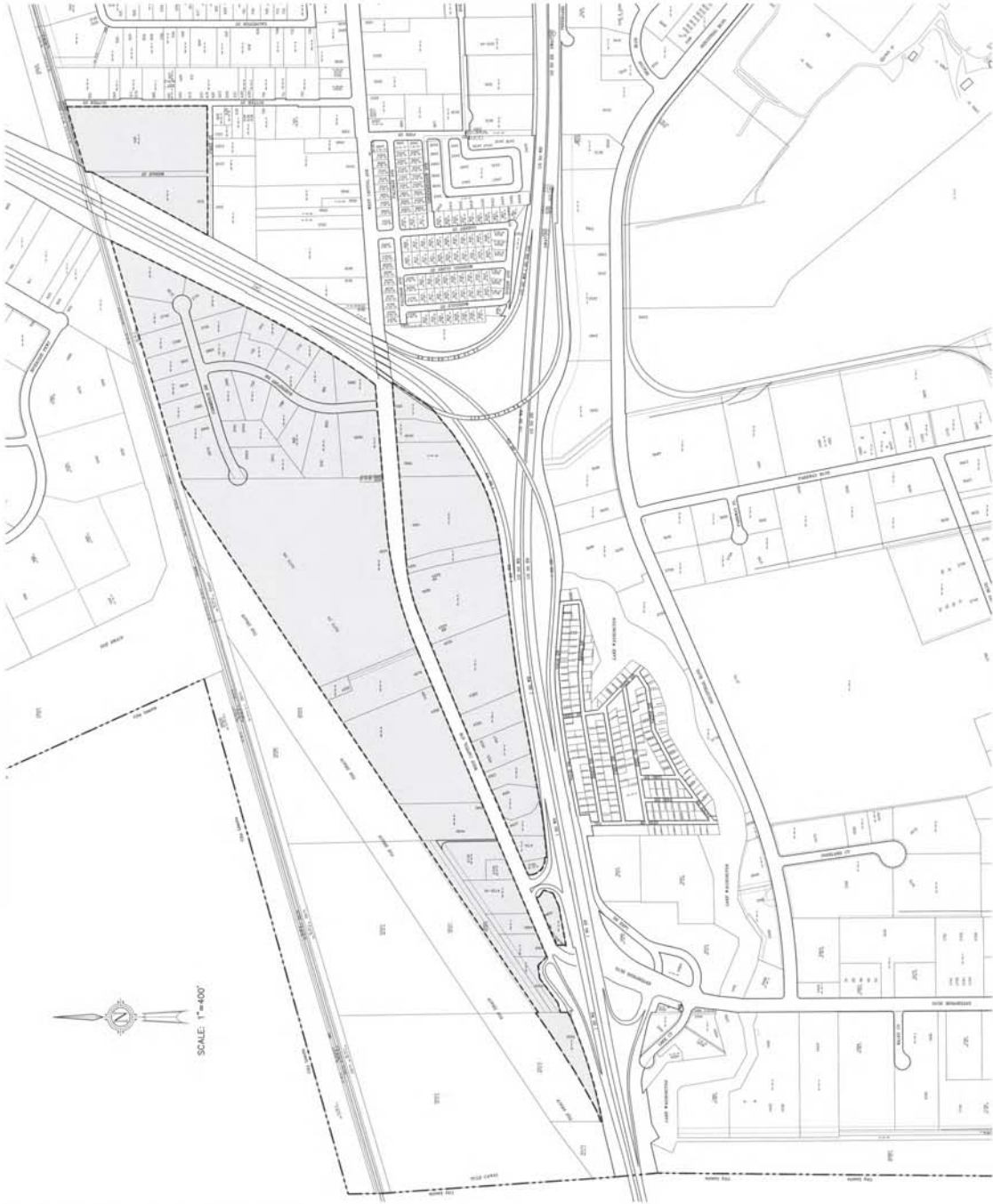
PROPOSED ENHANCED INFRASTRUCTURE FINANCING DISTRICT  
(EFD) No. 1C - RIVERSIDE/CHP  
CITY OF WEST SACRAMENTO,  
COUNTY OF YOLO,  
STATE OF CALIFORNIA



**VICINITY MAP**  
SCALE: 1" = 1200'

**LEGEND**

- [ Dashed line ] ENHANCED INFRASTRUCTURE FINANCING DISTRICT
- [ Solid line ] (EIFD) No. 10 - WEST END



SCALE: 1" = 400'

FILED IN THE OFFICE OF THE CITY CLERK OF THE CITY OF WEST SACRAMENTO THIS \_\_\_\_\_ DAY OF \_\_\_\_\_, 201\_\_.

\_\_\_\_\_ KRYS S. BARKIN  
CITY CLERK  
CITY OF WEST SACRAMENTO

I HEREBY CERTIFY THAT THIS MAP SHOWS THE PROPOSED BOUNDARIES OF ENHANCED INFRASTRUCTURE FINANCING DISTRICT No. 10, CITY OF WEST SACRAMENTO, COUNTY OF YOLO, STATE OF CALIFORNIA, WAS RECORDED IN THE PUBLIC RECORDS OF THE COUNTY OF SACRAMENTO AT A REGULAR MEETING THEREOF HELD ON THE \_\_\_\_\_ DAY OF \_\_\_\_\_, 201\_\_ BY ITS RESOLUTION No. \_\_\_\_\_.

\_\_\_\_\_ KRYS S. BARKIN  
CITY CLERK  
CITY OF WEST SACRAMENTO

FILED THIS \_\_\_\_\_ DAY OF \_\_\_\_\_, 201\_\_ AT THE HOUR OF \_\_\_\_\_ O'CLOCK \_\_\_\_\_ M. IN BOOK \_\_\_\_\_ OF MAPS, AT PAGE \_\_\_\_\_ IN THE OFFICE OF THE COUNTY RECORDER OF THE COUNTY OF YOLO, STATE OF CALIFORNIA.

\_\_\_\_\_ FREDERICK OAKLEY  
COUNTY RECORDER  
COUNTY OF YOLO

**PROPOSED ENHANCED INFRASTRUCTURE FINANCING DISTRICT  
(EIFD) No. 10 - WEST END  
CITY OF WEST SACRAMENTO,  
COUNTY OF YOLO,  
STATE OF CALIFORNIA**



VICINITY MAP  
SCALE: 1" = 1200'

**LEGEND**

 ENHANCED INFRASTRUCTURE FINANCING DISTRICT  
(EIFD) No. 1E - IRON TRIANGLE

FILED IN THE OFFICE OF THE CITY CLERK OF THE CITY OF  
WEST SACRAMENTO THIS \_\_\_\_\_ DAY OF \_\_\_\_\_, 201\_\_\_\_.

CRYSS RANKIN  
CITY CLERK  
CITY OF WEST SACRAMENTO

I HEREBY CERTIFY THAT THIS MAP SHOWS THE PROPOSED BOUNDARIES  
OF ENHANCED INFRASTRUCTURE FINANCING DISTRICT No. 1E, CITY OF  
WEST SACRAMENTO, COUNTY OF YOLO, STATE OF CALIFORNIA, WAS  
CORRECTLY RECORDED AND INDEXED IN THE CITY OF WEST SACRAMENTO AT A  
REGULAR MEETING THEREOF HELD ON THE \_\_\_\_\_ DAY OF \_\_\_\_\_, 201\_\_\_\_,  
BY ITS RESOLUTION No. \_\_\_\_\_.

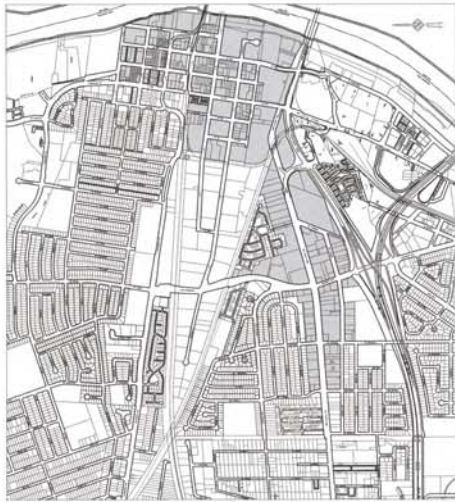
CRYSS RANKIN  
CITY CLERK  
CITY OF WEST SACRAMENTO

FILED THIS \_\_\_\_\_ DAY OF \_\_\_\_\_, 201\_\_\_\_, AT THE HOUR OF \_\_\_\_\_ O'CLOCK, P. M.,  
IN BOOK \_\_\_\_\_ OF MAPS, AT PAGE \_\_\_\_\_ IN THE OFFICE OF THE COUNTY RECORDER OF  
THE COUNTY OF YOLO, STATE OF CALIFORNIA.

FREDERICK OAKLEY  
COUNTY RECORDER  
COUNTY OF YOLO



**PROPOSED ENHANCED INFRASTRUCTURE FINANCING DISTRICT  
(EIFD) No. 1E - IRON TRIANGLE  
CITY OF WEST SACRAMENTO,  
COUNTY OF YOLO,  
STATE OF CALIFORNIA**



VICINITY MAP  
SCALE: 1" = 1200'

LEGEND

- ENHANCED INFRASTRUCTURE FINANCING DISTRICT (EIFD) No. IF - WASHINGTON/DOWNTOWN

FILED IN THE OFFICE OF THE CITY CLERK OF THE CITY OF WEST SACRAMENTO THIS \_\_\_\_\_ DAY OF \_\_\_\_\_, 201\_\_.

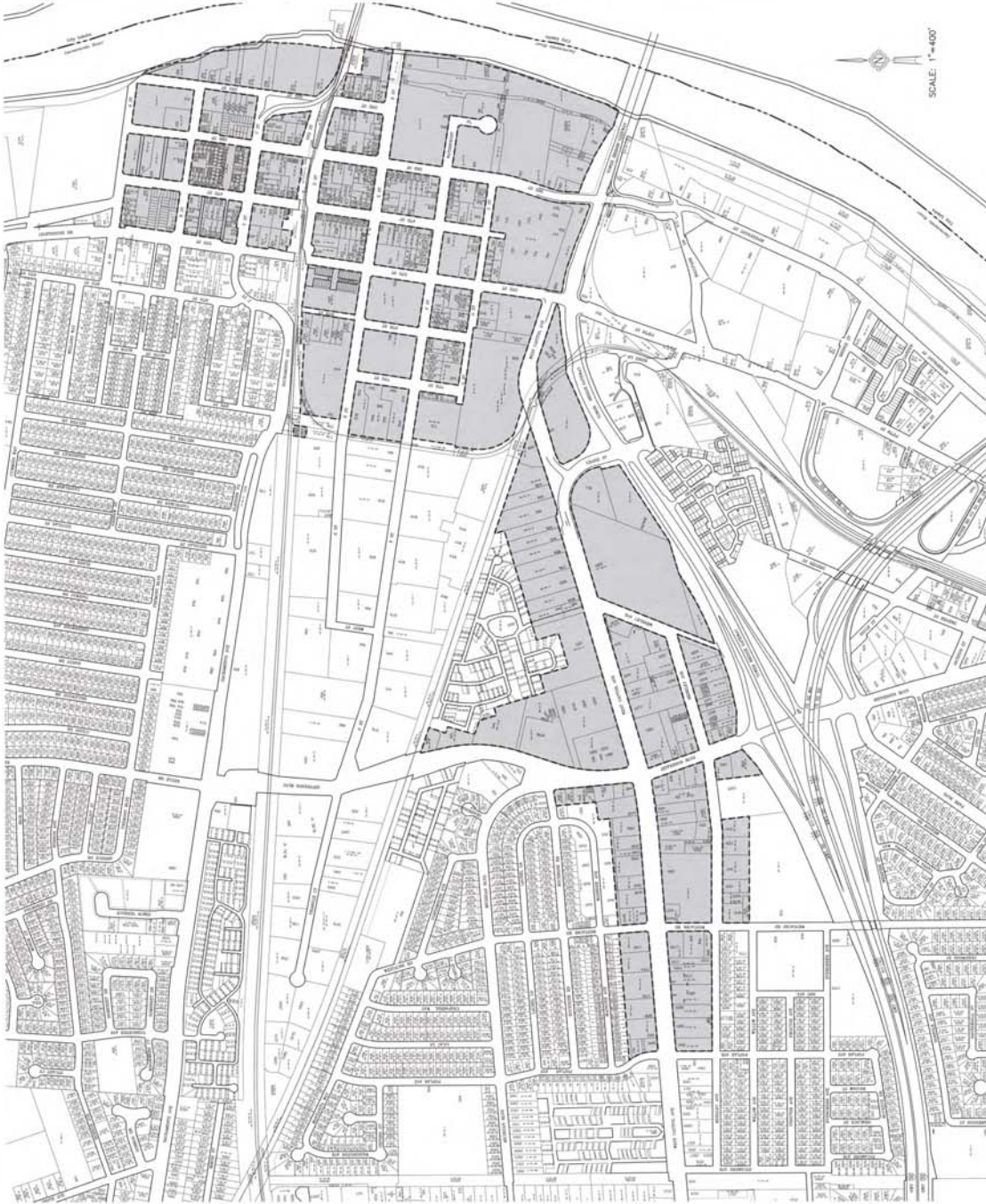
KRYSS RANKIN  
CITY CLERK  
CITY OF WEST SACRAMENTO

I HEREBY CERTIFY THAT THIS MAP SHOWS THE PROPOSED BOUNDARIES OF ENHANCED INFRASTRUCTURE FINANCING DISTRICT No. IF - CITY OF WEST SACRAMENTO, COUNTY OF YOLO, STATE OF CALIFORNIA, WAS PREPARED IN ACCORDANCE WITH THE CITY OF WEST SACRAMENTO AT A REGULAR MEETING THEREOF HELD ON THE \_\_\_\_\_ DAY OF \_\_\_\_\_, 201\_\_ BY ITS RESOLUTION No. \_\_\_\_\_.

KRYSS RANKIN  
CITY CLERK  
CITY OF WEST SACRAMENTO

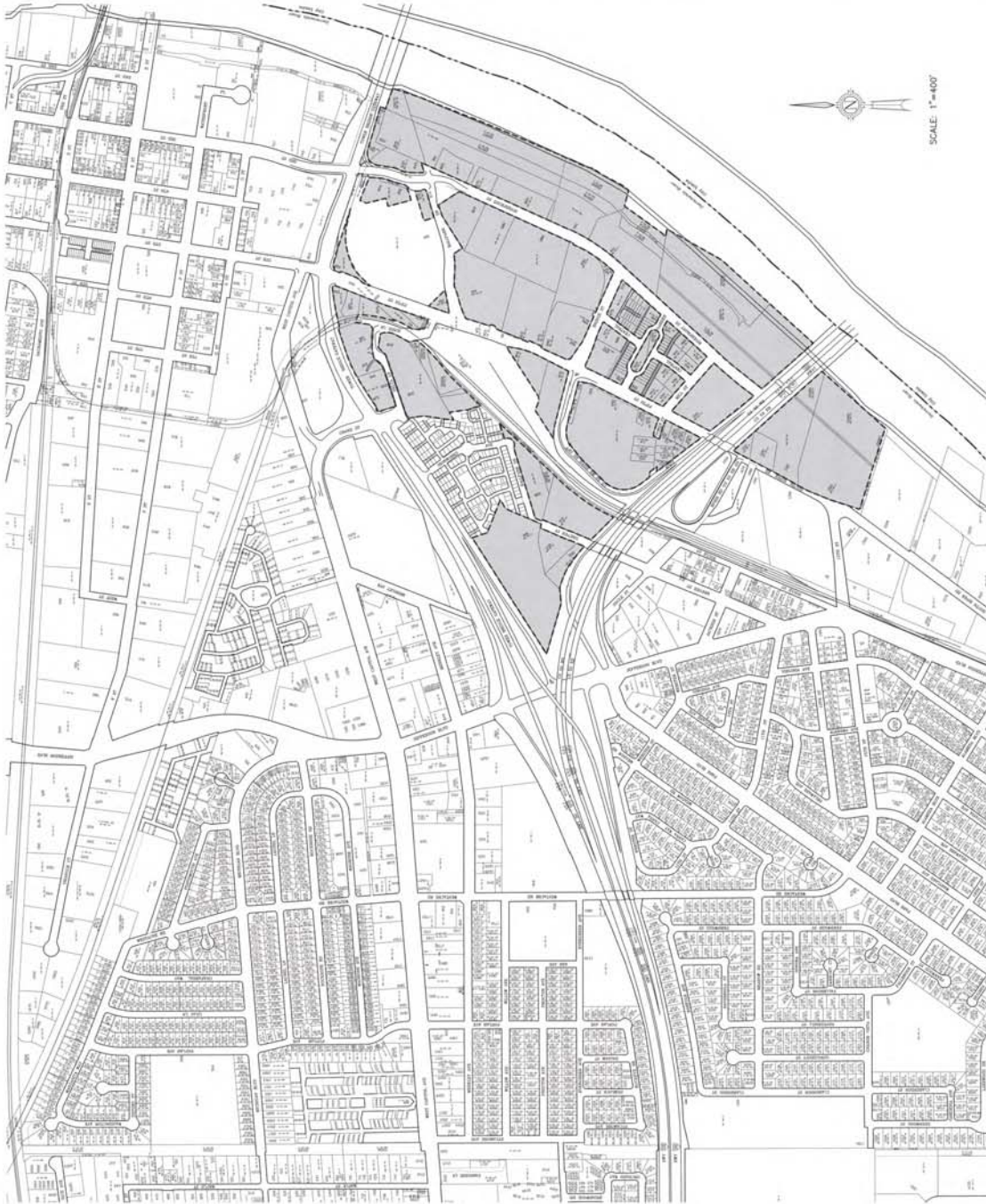
FILED THIS \_\_\_\_\_ DAY OF \_\_\_\_\_, 201\_\_ AT THE HOUR OF \_\_\_\_\_ O'CLOCK \_\_\_\_\_ M. IN BOOK \_\_\_\_\_ OF MAPS, AT PAGE \_\_\_\_\_ IN THE OFFICE OF THE COUNTY RECORDER OF THE COUNTY OF YOLO, STATE OF CALIFORNIA.

FREDDE OAKLEY  
COUNTY RECORDER  
COUNTY OF YOLO



PROPOSED ENHANCED INFRASTRUCTURE FINANCING DISTRICT  
(EIFD) No. IF - WASHINGTON/DOWNTOWN  
CITY OF WEST SACRAMENTO,  
COUNTY OF YOLO,  
STATE OF CALIFORNIA





PROPOSED ENHANCED INFRASTRUCTURE FINANCING DISTRICT  
(EFD) No. 10 - BRIDGE DISTRICT  
CITY OF WEST SACRAMENTO,  
COUNTY OF YOLO,  
STATE OF CALIFORNIA

SHEET 1 OF 1



VICINITY MAP  
SCALE: 1" = 1200'

**LEGEND**  
 ENHANCED INFRASTRUCTURE FINANCING DISTRICT  
 (EFD) No. 10 - BRIDGE DISTRICT

FILED IN THE OFFICE OF THE CITY CLERK OF THE CITY OF  
WEST SACRAMENTO THIS \_\_\_\_\_ DAY OF \_\_\_\_\_,  
201\_\_\_\_.

CRYSS BARKIN  
CITY CLERK  
CITY OF WEST SACRAMENTO

I HEREBY CERTIFY THAT THE MAP SHOWING THE PROPOSED BOUNDARIES  
OF ENHANCED INFRASTRUCTURE FINANCING DISTRICT No. 10, CITY OF  
WEST SACRAMENTO, COUNTY OF YOLO, STATE OF CALIFORNIA, WAS  
FILED FOR RECORD IN THE OFFICE OF THE COUNTY RECORDER AT A  
REGULAR MEETING THEREOF HELD ON THE \_\_\_\_\_ DAY OF \_\_\_\_\_,  
201\_\_\_\_, BY ITS RESOLUTION No. \_\_\_\_\_.

KRYSS BARKIN  
CITY CLERK  
CITY OF WEST SACRAMENTO

FILED THIS \_\_\_\_\_ DAY OF \_\_\_\_\_, 201\_\_\_\_, AT THE HOUR OF \_\_\_\_\_ O'CLOCK  
P.M. IN BOOK \_\_\_\_\_ OF MAPS, AT PAGE \_\_\_\_\_, IN THE OFFICE OF THE COUNTY RECORDER OF  
THE COUNTY OF YOLO, STATE OF CALIFORNIA.

FREDDE OAKLEY  
COUNTY RECORDER  
COUNTY OF YOLO



VICINITY MAP  
SCALE: 1" = 1200'

**LEGEND**

 ENHANCED INFRASTRUCTURE FINANCING DISTRICT (EIFD) No. 1H - PIONEER BLUFF

FILED IN THE OFFICE OF THE CITY CLERK OF THE CITY OF WEST SACRAMENTO THIS \_\_\_\_\_ DAY OF \_\_\_\_\_, 201\_\_.

KRYSS RANKIN  
CITY CLERK  
CITY OF WEST SACRAMENTO

I HEREBY CERTIFY THAT THIS MAP SHOWS THE PROPOSED BOUNDARIES OF ENHANCED INFRASTRUCTURE FINANCING DISTRICT No. 1H, CITY OF WEST SACRAMENTO, COUNTY OF YOLO, STATE OF CALIFORNIA. WAS RECORDED IN THE OFFICE OF THE COUNTY RECORDER OF THE COUNTY OF YOLO, STATE OF CALIFORNIA, AT A REGULAR MEETING THEREOF HELD ON THE \_\_\_\_\_ DAY OF \_\_\_\_\_, 201\_\_., BY ITS RESOLUTION No. \_\_\_\_\_.

KRYSS RANKIN  
CITY CLERK  
CITY OF WEST SACRAMENTO

FILED THIS \_\_\_\_\_ DAY OF \_\_\_\_\_, 201\_\_ AT THE HOUR OF \_\_\_\_\_ O'CLOCK \_\_\_\_\_ M. IN BOOK \_\_\_\_\_ OF MAPS, AT PAGE \_\_\_\_\_ IN THE OFFICE OF THE COUNTY RECORDER OF THE COUNTY OF YOLO, STATE OF CALIFORNIA.

FREDDE OAKLEY  
COUNTY RECORDER  
COUNTY OF YOLO



**PROPOSED ENHANCED INFRASTRUCTURE FINANCING DISTRICT  
(EIFD) No. 1H - PIONEER BLUFF  
CITY OF WEST SACRAMENTO,  
COUNTY OF YOLO,  
STATE OF CALIFORNIA**



**VICINITY MAP**  
SCALE: 1" = 1200'

**LEGEND**

- ENHANCED INFRASTRUCTURE FINANCING DISTRICT (EIFD) No. 11 - NORTH OF FORT INDUSTRIAL

FILED IN THE OFFICE OF THE CITY CLERK OF THE CITY OF WEST SACRAMENTO THIS \_\_\_\_\_ DAY OF \_\_\_\_\_, 201\_\_.

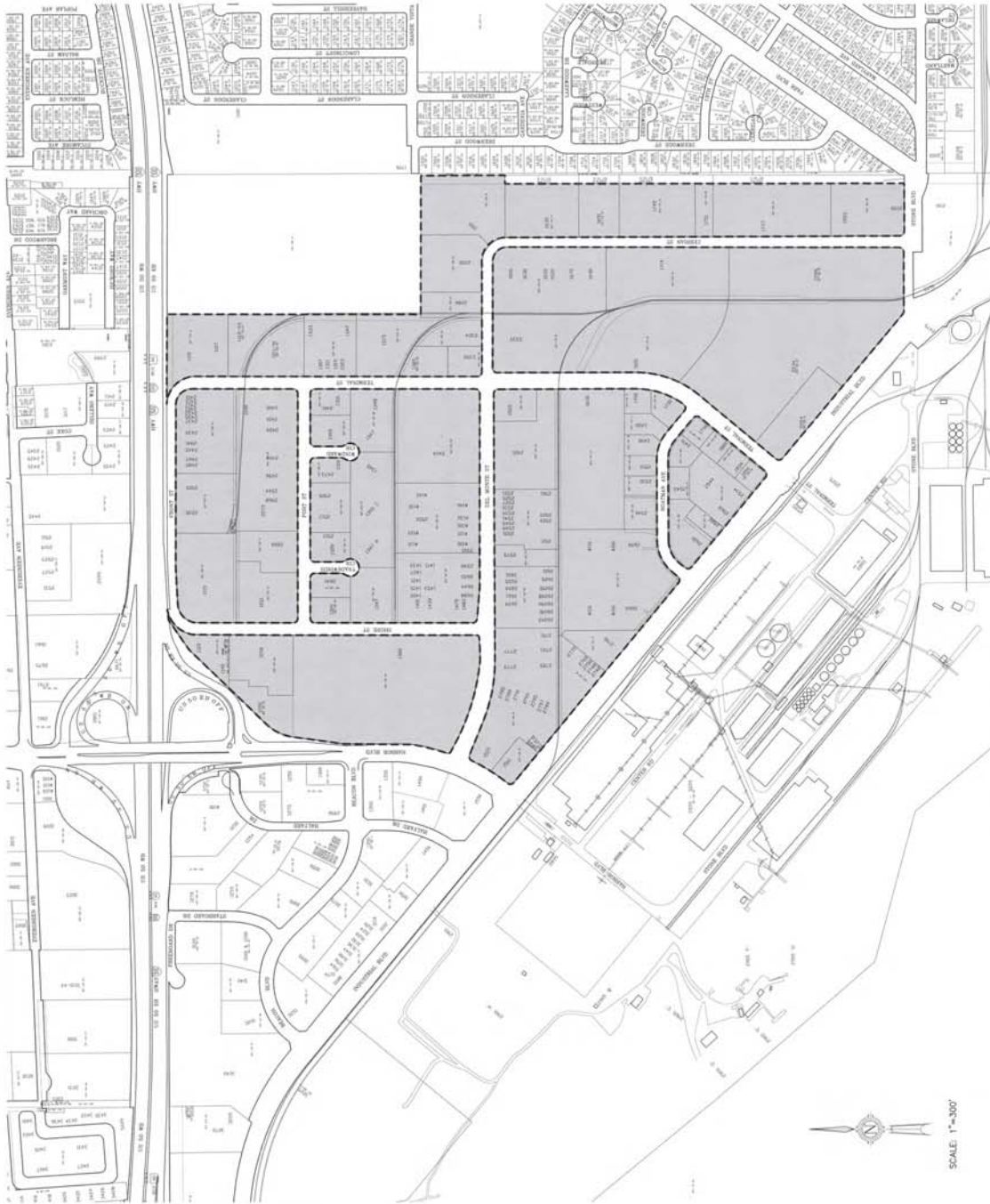
\_\_\_\_\_  
KRYSS BANNON  
CITY CLERK  
CITY OF WEST SACRAMENTO

I HEREBY CERTIFY THAT THIS MAP SHOWING THE PROPOSED BOUNDARIES OF ENHANCED INFRASTRUCTURE FINANCING DISTRICT No. 11, CITY OF WEST SACRAMENTO, COUNTY OF YOLO, STATE OF CALIFORNIA, WAS APPROVED BY THE CITY COUNCIL OF WEST SACRAMENTO AT A REGULAR MEETING HELD ON THE \_\_\_\_\_ DAY OF \_\_\_\_\_, 201\_\_ BY ITS RESOLUTION No. \_\_\_\_\_.

\_\_\_\_\_  
KRYSS BANNON  
CITY CLERK  
CITY OF WEST SACRAMENTO

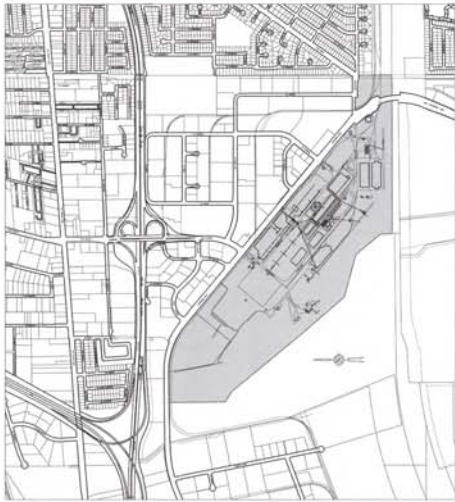
FILED THIS \_\_\_\_\_ DAY OF \_\_\_\_\_, 201\_\_ AT THE HOUR OF \_\_\_\_\_ O'CLOCK \_\_\_\_\_ M. IN BOOK \_\_\_\_\_ OF MAPS, AT PAGE \_\_\_\_\_ IN THE OFFICE OF THE COUNTY RECORDER OF THE COUNTY OF YOLO, STATE OF CALIFORNIA.

\_\_\_\_\_  
FREDDIE OAKLEY  
COUNTY RECORDER  
COUNTY OF YOLO



SCALE: 1" = 300'

**PROPOSED ENHANCED INFRASTRUCTURE FINANCING DISTRICT  
(EIFD) No. 11 - NORTH OF FORT INDUSTRIAL  
CITY OF WEST SACRAMENTO,  
COUNTY OF YOLO,  
STATE OF CALIFORNIA**



**VICINITY MAP**  
SCALE: 1" = 1200'

**LEGEND**

ENHANCED INFRASTRUCTURE FINANCING DISTRICT  
(EFD) No. 1J - PORT NORTH TERMINAL

FILED IN THE OFFICE OF THE CITY CLERK OF THE CITY OF WEST SACRAMENTO THIS \_\_\_\_\_ DAY OF \_\_\_\_\_, 201\_\_.

KRYSS BARKIN  
CITY CLERK  
CITY OF WEST SACRAMENTO

I HEREBY CERTIFY THAT THIS MAP SHOWS THE PROPOSED BOUNDARIES OF ENHANCED INFRASTRUCTURE FINANCING DISTRICT No. 1A, CITY OF WEST SACRAMENTO, COUNTY OF YOLO, STATE OF CALIFORNIA, WAS APPROVED BY THE CITY OF WEST SACRAMENTO AT A REGULAR MEETING HELD ON THE \_\_\_\_\_ DAY OF \_\_\_\_\_, 201\_\_ BY ITS RESOLUTION No. \_\_\_\_\_.

KRYSS BARKIN  
CITY CLERK  
CITY OF WEST SACRAMENTO

FILED THIS \_\_\_\_\_ DAY OF \_\_\_\_\_, 201\_\_ AT THE HOUR OF \_\_\_\_\_ O'CLOCK \_\_\_\_\_ M. IN BOOK \_\_\_\_\_ OF MAPS, AT PAGE \_\_\_\_\_ IN THE OFFICE OF THE COUNTY RECORDER OF THE COUNTY OF YOLO, STATE OF CALIFORNIA.

FREDIE OAKLEY  
COUNTY RECORDER  
COUNTY OF YOLO



SCALE: 1" = 400'

**PROPOSED ENHANCED INFRASTRUCTURE FINANCING DISTRICT  
(EFD) No. 1J - PORT NORTH TERMINAL  
CITY OF WEST SACRAMENTO,  
COUNTY OF YOLO,  
STATE OF CALIFORNIA**



**VICINITY MAP**  
SCALE: 1" = 1500'

**LEGEND**

 ENHANCED INFRASTRUCTURE FINANCING DISTRICT  
(EIFD) No. 1K - PORT OF SACRAMENTO INDUSTRIAL PARK

FILED IN THE OFFICE OF THE CITY CLERK OF THE CITY OF  
WEST SACRAMENTO THIS \_\_\_\_\_ DAY OF \_\_\_\_\_, 201\_\_

\_\_\_\_\_  
KRYSS RANKIN  
CITY CLERK  
CITY OF WEST SACRAMENTO

I HEREBY CERTIFY THAT THIS MAP SHOWS THE REQUESTED BOUNDARIES  
OF ENHANCED INFRASTRUCTURE FINANCING DISTRICT No. 1K, CITY OF  
WEST SACRAMENTO, COUNTY OF YOLO, STATE OF CALIFORNIA, WAS  
CORRECTLY PREPARED AND THAT THE CITY OF WEST SACRAMENTO AT A  
REGULAR MEETING THEREOF HELD ON THE \_\_\_\_\_ DAY OF \_\_\_\_\_,  
201\_\_, BY ITS RESOLUTION No. \_\_\_\_\_

\_\_\_\_\_  
KRYSS RANKIN  
CITY CLERK  
CITY OF WEST SACRAMENTO

FILED THIS \_\_\_\_\_ DAY OF \_\_\_\_\_, 201\_\_ AT THE HOUR OF \_\_\_\_\_ O'CLOCK \_\_\_\_\_ M.  
IN BOOK \_\_\_\_\_ OF MAPS, AT PAGE \_\_\_\_\_ IN THE OFFICE OF THE COUNTY RECORDER OF  
THE COUNTY OF YOLO, STATE OF CALIFORNIA.

\_\_\_\_\_  
FREDIE OAKLEY  
COUNTY RECORDER  
COUNTY OF YOLO



**PROPOSED ENHANCED INFRASTRUCTURE FINANCING DISTRICT  
(EIFD) No. 1K - PORT OF SACRAMENTO INDUSTRIAL PARK  
CITY OF WEST SACRAMENTO,  
COUNTY OF YOLO,  
STATE OF CALIFORNIA**



VICINITY MAP  
SCALE: 1" = 1600'

**LEGEND**

ENHANCED INFRASTRUCTURE FINANCING DISTRICT  
(EIFD) No. 1L - SOUTHPORT INDUSTRIAL PARK

FILED IN THE OFFICE OF THE CITY CLERK OF THE CITY OF  
WEST SACRAMENTO THIS \_\_\_\_\_ DAY OF \_\_\_\_\_, 201\_\_\_\_.

KRYSS BARKIN  
CITY CLERK  
CITY OF WEST SACRAMENTO

I HEREBY CERTIFY THAT THIS MAP SHOWS THE PROPOSED BOUNDARIES  
OF ENHANCED INFRASTRUCTURE FINANCING DISTRICT No. 1L, CITY OF  
WEST SACRAMENTO, COUNTY OF YOLO, STATE OF CALIFORNIA, WAS  
CORRECTLY FILED IN THE OFFICE OF THE CITY CLERK OF WEST SACRAMENTO AT A  
REGULAR MEETING THEREOF HELD ON THE \_\_\_\_\_ DAY OF \_\_\_\_\_, 201\_\_\_\_,  
BY ITS RESOLUTION No. \_\_\_\_\_.

KRYSS BARKIN  
CITY CLERK  
CITY OF WEST SACRAMENTO

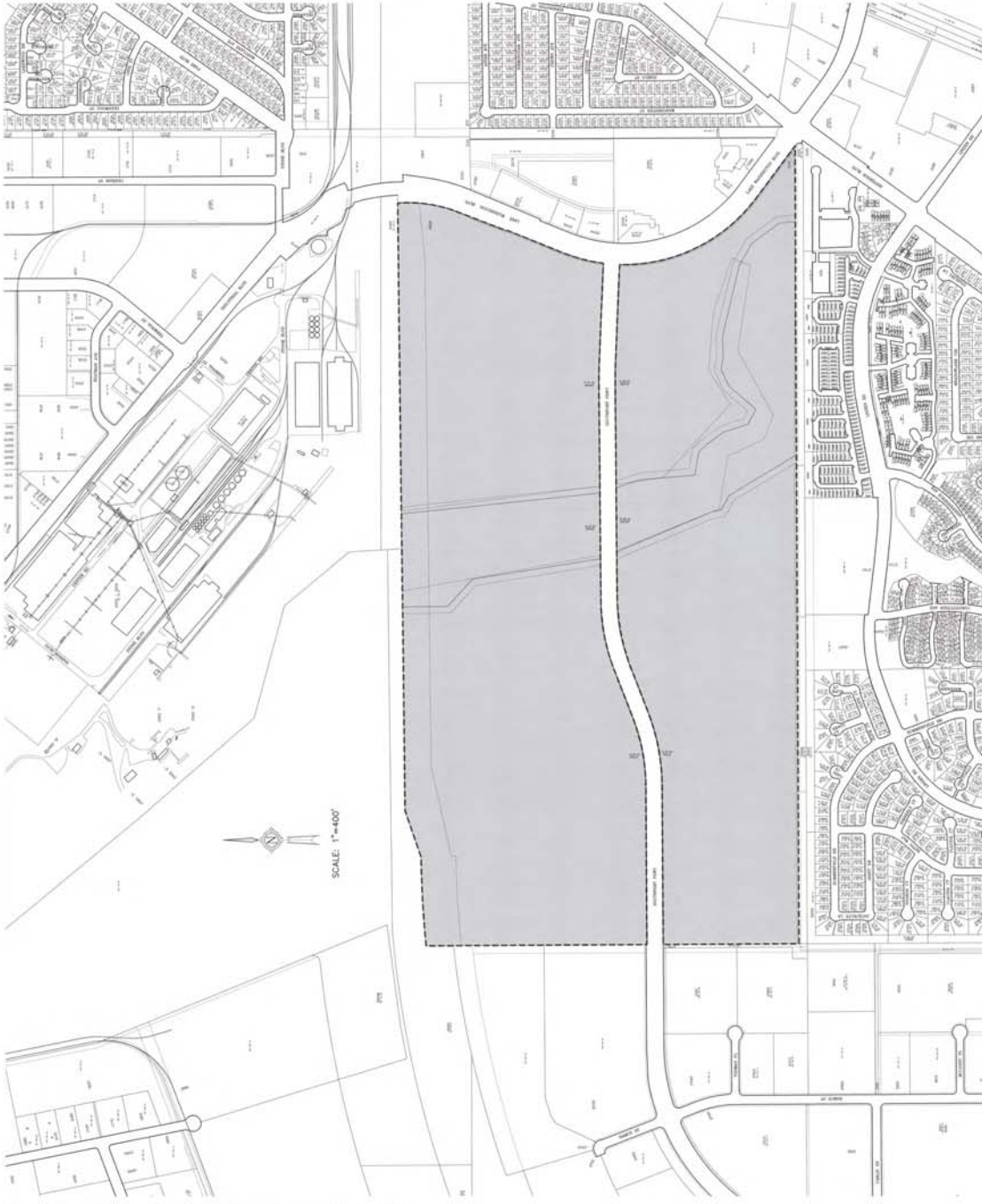
FILED THIS \_\_\_\_\_ DAY OF \_\_\_\_\_, 201\_\_\_\_, AT THE HOUR OF \_\_\_\_\_ O'CLOCK \_\_\_\_\_ M.,  
IN BOOK \_\_\_\_\_ OF MAPS, AT PAGE \_\_\_\_\_ IN THE OFFICE OF THE COUNTY RECORDER OF  
THE COUNTY OF YOLO, STATE OF CALIFORNIA.

FREDDIE OAKLEY  
COUNTY RECORDER  
COUNTY OF YOLO

**PROPOSED ENHANCED INFRASTRUCTURE FINANCING DISTRICT  
(EIFD) No. 1L - SOUTHPORT INDUSTRIAL PARK  
CITY OF WEST SACRAMENTO,  
COUNTY OF YOLO,  
STATE OF CALIFORNIA**



VICINITY MAP  
SCALE 1" = 1600'



SCALE 1" = 400'

**LEGEND**

ENHANCED INFRASTRUCTURE FINANCING DISTRICT  
(EIFD) No. 1M - SEAWAY

FILED IN THE OFFICE OF THE CITY CLERK OF THE CITY OF WEST SACRAMENTO THIS \_\_\_\_\_ DAY OF \_\_\_\_\_, 201\_\_\_\_.

KRYSS RANKIN  
CITY CLERK  
CITY OF WEST SACRAMENTO

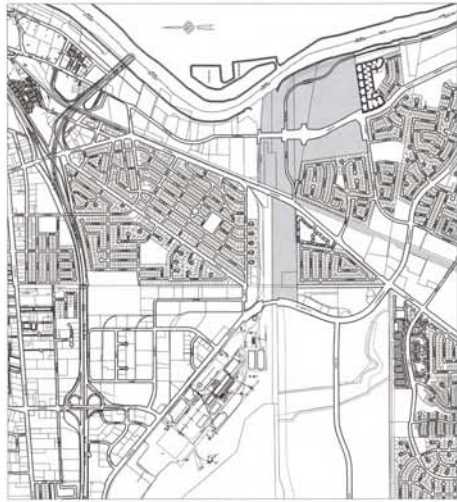
I HEREBY CERTIFY THAT THIS MAP SHOWING THE PROPOSED BOUNDARIES OF ENHANCED INFRASTRUCTURE FINANCING DISTRICT No. 1M, CITY OF WEST SACRAMENTO, COUNTY OF YOLO, STATE OF CALIFORNIA, WAS FILED IN THE OFFICE OF THE COUNTY RECORDER AT A REGULAR MEETING THEREOF, HELD ON THE \_\_\_\_\_ DAY OF \_\_\_\_\_, 201\_\_\_\_, BY ITS RESOLUTION No. \_\_\_\_\_.

KRYSS RANKIN  
CITY CLERK  
CITY OF WEST SACRAMENTO

FILED THIS \_\_\_\_\_ DAY OF \_\_\_\_\_, 201\_\_\_\_, AT THE HOUR OF \_\_\_\_\_ O'CLOCK \_\_\_\_\_ M. IN BOOK \_\_\_\_\_ OF MAPS, AT PAGE \_\_\_\_\_ IN THE OFFICE OF THE COUNTY RECORDER OF THE COUNTY OF YOLO, STATE OF CALIFORNIA.

FREDDIE OAKLEY  
COUNTY RECORDER  
COUNTY OF YOLO

PROPOSED ENHANCED INFRASTRUCTURE FINANCING DISTRICT  
(EIFD) No. 1M - SEAWAY  
CITY OF WEST SACRAMENTO,  
COUNTY OF YOLO,  
STATE OF CALIFORNIA



**VICINITY MAP**  
SCALE: 1" = 1600'

**LEGEND**

 ENHANCED INFRASTRUCTURE FINANCING DISTRICT  
(EIFD) No. IN - STONE LOCK

FILED IN THE OFFICE OF THE CITY CLERK OF THE CITY OF  
WEST SACRAMENTO THIS \_\_\_\_\_ DAY OF \_\_\_\_\_,  
201\_\_\_\_.

KRYSS BARKIN  
CITY CLERK  
CITY OF WEST SACRAMENTO

I HEREBY CERTIFY THAT THIS MAP SHOWS THE PROPOSED BOUNDARIES  
OF ENHANCED INFRASTRUCTURE FINANCING DISTRICT No. IN, CITY OF  
WEST SACRAMENTO, COUNTY OF YOLO, STATE OF CALIFORNIA, WAS  
PRESENTED TO THE CITY OF WEST SACRAMENTO AT A  
REGULAR MEETING THEREOF HELD ON THE \_\_\_\_\_ DAY OF \_\_\_\_\_,  
201\_\_\_\_, BY ITS RESOLUTION No. \_\_\_\_\_.

KRYSS BARKIN  
CITY CLERK  
CITY OF WEST SACRAMENTO

FILED THIS \_\_\_\_\_ DAY OF \_\_\_\_\_, 201\_\_\_\_, AT THE HOUR OF \_\_\_\_\_ O'CLOCK \_\_\_\_\_ M.,  
IN BOOK \_\_\_\_\_ OF MAPS, AT PAGE \_\_\_\_\_ IN THE OFFICE OF THE COUNTY RECORDER OF  
THE COUNTY OF YOLO, STATE OF CALIFORNIA.

FREDDIE OAKLEY  
COUNTY RECORDER  
COUNTY OF YOLO



**PROPOSED ENHANCED INFRASTRUCTURE FINANCING DISTRICT**  
(EIFD) No. IN - STONE LOCK  
CITY OF WEST SACRAMENTO,  
COUNTY OF YOLO,  
STATE OF CALIFORNIA